



MIAMI-DADE COUNTY
PRODUCT CONTROL SECTION
 11805 SW 26 Street, Room 208
 Miami, Florida 33175-2474
 T (786) 315-2590 F (786) 315-2599
www.miamidade.gov/building

DEPARTMENT OF REGULATORY AND ECONOMIC RESOURCES (RER)
 BOARD AND CODE ADMINISTRATION DIVISION

NOTICE OF ACCEPTANCE (NOA)

CGI Windows and Doors, Inc.
10100 NW 25th Street
Miami, FL 33172

SCOPE:

This NOA is being issued under the applicable rules and regulations governing the use of construction materials. The documentation submitted has been reviewed and accepted by Miami-Dade County RER - Product Control Section to be used in Miami Dade County and other areas where allowed by the Authority Having Jurisdiction (AHJ).

This NOA shall not be valid after the expiration date stated below. The Miami-Dade County Product Control Section (In Miami Dade County) and/or the AHJ (in areas other than Miami Dade County) reserve the right to have this product or material tested for quality assurance purposes. If this product or material fails to perform in the accepted manner, the manufacturer will incur the expense of such testing and the AHJ may immediately revoke, modify, or suspend the use of such product or material within their jurisdiction. RER reserves the right to revoke this acceptance if it is determined by Miami-Dade County Product Control Section that this product or material fails to meet the requirements of the applicable building code.

This product is approved as described herein and has been designed to comply with the Florida Building Code, including the High Velocity Hurricane Zone.

DESCRIPTION: Series "Sentinel 130" Aluminum Fixed Window – S.M.I.

APPROVAL DOCUMENT: Drawing No. PW130SMI-NOA, titled "'Sentinel' Series 130 Fixed Window - SM", sheets 1 through 6 of 6, dated 05/22/19, with revision A dated 05/07/20, prepared by manufacturer, signed and sealed by Anthony Lynn Miller, P.E., bearing the Miami-Dade County Product Control Revision stamp with the Notice of Acceptance number and expiration date by the Miami-Dade County Product Control Section.

MISSILE IMPACT RATING: Small Missile Impact Resistant

LABELING: Each unit shall bear a permanent label with the manufacturer's name or logo, city, state, model/series, and following statement: "Miami-Dade County Product Control Approved", unless otherwise noted herein.

RENEWAL of this NOA shall be considered after a renewal application has been filed and there has been no change in the applicable building code negatively affecting the performance of this product.

TERMINATION of this NOA will occur after the expiration date or if there has been a revision or change in the materials, use, and/or manufacture of the product or process. Misuse of this NOA as an endorsement of any product, for sales, advertising or any other purposes shall automatically terminate this NOA. Failure to comply with any section of this NOA shall be cause for termination and removal of NOA.

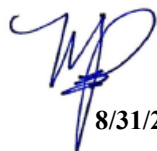
ADVERTISEMENT: The NOA number preceded by the words Miami-Dade County, Florida, and followed by the expiration date may be displayed in advertising literature. If any portion of the NOA is displayed, then it shall be done in its entirety.

INSPECTION: A copy of this entire NOA shall be provided to the user by the manufacturer or its distributors and shall be available for inspection at the job site at the request of the Building Official.

This NOA **revises NOA# 19-0603.01** and consists of this page 1 and evidence pages E-1, E-2, E-3, E-4 and E-5, as well as approval document mentioned above.

The submitted documentation was reviewed by **Manuel Perez, P.E.**




 8/31/20

NOA No. 20-0519.08
Expiration Date: July 31, 2024
Approval Date: September 10, 2020
 Page 1

CGI Windows and Doors, Inc.

NOTICE OF ACCEPTANCE: EVIDENCE SUBMITTED

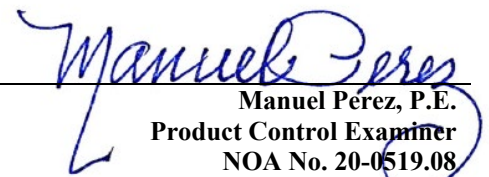
1. EVIDENCE SUBMITTED UNDER PREVIOUS NOA's

A. DRAWINGS

1. Manufacturer's die drawings and sections.
(Submitted under NOA No.14-0515.11)
2. Drawing No. **PW130SMI-NOA**, titled "Sentinel 130 Alum Fixed Window (S.M.I.)", sheets 1 through 6 of 6, dated 05/22/19, prepared by manufacturer, signed and sealed by Anthony Lynn Miller, P.E.
(Submitted under NOA No.19-0603.01)

B. TESTS

1. Test reports on: 1) Uniform Static Air Pressure Test, Loading per FBC, TAS 202-94
2) Large Missile Impact Test per FBC, TAS 201-94
3) Cyclic Wind Pressure Loading per FBC, TAS 203-94
along with marked-up drawings and installation diagram of a series 560 aluminum sliding glass door, prepared by Fenestration Testing Laboratory, Inc., Test Report No. **FTL-19-8916**, dated 04/10/19, signed and sealed by Idalmis Ortega, P.E.
(Submitted under NOA No.19-0603.01)
2. Test reports on: 1) Uniform Static Air Pressure Test, Loading per FBC, TAS 202-94
2) Water Resistance Test, per FBC, TAS 202-94
3) Small Missile Impact Test per FBC, TAS 201-94
4) Large Missile Impact Test per FBC, TAS 201-94
5) Cyclic Wind Pressure Loading per FBC, TAS 203-94
along with marked-up drawings and installation diagram of a series 130 and 410 aluminum fixed windows, prepared by Fenestration Testing Laboratory, Inc., Test Report No. **FTL-19-8917**, dated 04/09/19, signed and sealed by Idalmis Ortega, P.E.
(Submitted under NOA No.19-0603.01)
3. Test reports on: 1) Uniform Static Air Pressure Test, Loading per FBC TAS 202-94
2) Large Missile Impact Test per FBC, TAS 201-94
3) Cyclic Wind Pressure Loading per FBC, TAS 203-94
along with marked-up drawings and installation diagram of a series 7500 PVC fixed window, to qualify DuPont "Butacite" PVB interlayer, Duraseal® and Super Spacer® insulating glass spacer, prepared by Certified Test Laboratories, Test Report No. **CTLA-3056 WA**, dated 03/03/15, signed and sealed by Ramesh C. Patel, P.E.
(Submitted under NOA No.15-0512.17)


Manuel Pérez, P.E.
Product Control Examiner
NOA No. 20-0519.08
Expiration Date: July 31, 2024
Approval Date: September 10, 2020

NOTICE OF ACCEPTANCE: EVIDENCE SUBMITTED


1. EVIDENCE SUBMITTED UNDER PREVIOUS NOA's (CONTINUED)

B. TESTS (CONTINUED)

4. Test reports on: 1) Uniform Static Air Pressure Test, Loading per FBC TAS 202-94
2) Large Missile Impact Test per FBC, TAS 201-94
3) Cyclic Wind Pressure Loading per FBC, TAS 203-94
along with marked-up drawings and installation diagram of a series 7400 PVC project out window, to qualify DuPont "Butacite" PVB interlayer, Duraseal® and Super Spacer® insulating glass spacer, prepared by Certified Test Laboratories, Test Report No. **CTLA-3056 WB**, dated 03/03/15, signed and sealed by Ramesh C. Patel, P.E.
(Submitted under NOA No.15-0512.17)
5. Test reports on: 1) Uniform Static Air Pressure Test, Loading per FBC TAS 202-94
2) Large Missile Impact Test per FBC, TAS 201-94
3) Cyclic Wind Pressure Loading per FBC, TAS 203-94
along with marked-up drawings and installation diagram of a series 238 aluminum fixed window, to qualify DuPont "Butacite" PVB interlayer, Duraseal® and Super Spacer® insulating glass spacer, prepared by Certified Test Laboratories, Test Report No. **CTLA-3056 WC**, dated 04/16/15, signed and sealed by Ramesh C. Patel, P.E.
(Submitted under NOA No.15-0512.17)
6. Test reports on: 1) Air Infiltration Test, per FBC, TAS 202-94
2) Uniform Static Air Pressure Test, Loading per FBC TAS 202-94
3) Water Resistance Test, per FBC, TAS 202-94
4) Small Missile Impact Test per FBC, TAS 201-94
5) Cyclic Wind Pressure Loading per FBC, TAS 203-94
6) Forced Entry Test, per FBC 2411.3.2.1, and TAS 202-94
along with marked-up drawings and installation diagram of an aluminum fixed window, prepared by Certified Testing Laboratories, Test Report No. **CTLA 3009WC**, dated 03/24/14, signed and sealed by Ramesh C. Patel, P.E.
(Submitted under NOA No.14-0515.11)

C. CALCULATIONS

1. Anchor verification calculations and structural analysis, complying with **FBC 5th Edition (2014)**, dated 04/07/14 and updated on 09/06/17 to comply with **FBC 6th Edition (2017)**, prepared by Al-Farooq Corporation, signed and sealed by Javad Ahmad, P.E.
(Submitted under NOA's No.15-0512.17 and 17-0918.08)
2. Glazing complies with **ASTM E1300-09**.


Manuel Pérez, P.E.
Product Control Examiner
NOA No. 20-0519.08
Expiration Date: July 31, 2024
Approval Date: September 10, 2020

CGI Windows and Doors, Inc.

NOTICE OF ACCEPTANCE: EVIDENCE SUBMITTED

1. EVIDENCE SUBMITTED UNDER PREVIOUS NOA's (CONTINUED)

D. QUALITY ASSURANCE

1. Miami-Dade Department of Regulatory and Economic Resources (RER)

E. MATERIAL CERTIFICATIONS

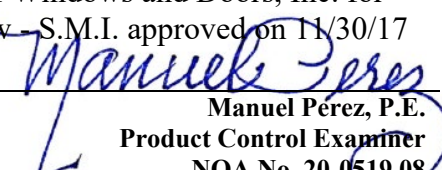
1. Notice of Acceptance No. **17-0712.05** issued to **Eastman Chemical Company (MA)** for their "**Saflex Clear and Color Glass Interlayers**" dated 09/07/17, expiring on 05/21/21.
2. Notice of Acceptance No. **16-1117.01** issued to **Kuraray America, Inc.** for their "**Trosifol® Ultraclear, Clear and Color PVB Interlayers**" dated 01/19/17, expiring on 07/08/19.

F. STATEMENTS

1. Statement letter of conformance, complying with **FBC 6th Edition (2017)**, dated May 23, 2019, issued by manufacturer, signed and sealed by A. Lynn Miller, P.E.
(Submitted under NOA No.19-0603.01)
2. Statement letter of no financial interest, dated May 23, 2019, issued by manufacturer, signed and sealed by A. Lynn Miller, P.E.
(Submitted under NOA No.19-0603.01)
3. Proposal No. **19-0219** issued by the Product Control Section, dated March 13, 2019, signed by Ishaq Chanda, P.E.
(Submitted under NOA No.19-0603.01)
4. Notification of Successor Engineer for manufacturer's NOA document per **Section 61G15-27.001** of the **Florida Administrative Code**, notifying original engineer that the successor engineer is assuming full professional and legal responsibility for all engineering documents pertaining to this NOA, dated May 22, 2019, signed and sealed by A. Lynn Miller, P.E.
(Submitted under NOA No.19-0603.01)
5. Test Proposal for the qualification of **Butacite®** PVB glass interlayer by Kuraray America, Inc., as well as **Duraseal®** and **Super Spacer® Standard** warm-edge flexible insulating glass spacers, dated December 16, 2014, issued by RER, Product Control Section, signed by Jaime Gascon, P.E., Supervisor, Product Control Section.
(Submitted under NOA No. 15-0512.17)
6. Proposal No. **13-1098** issued by the Product Control Section, dated October 02, 2013 and revised on February 24, 2014, signed by Manuel Perez, P.E.
(Submitted under NOA No.14-0515.11)

G. OTHERS

1. Notice of Acceptance No. **17-0918.08**, issued to CGI Windows and Doors, Inc. for their Series "Sentinel 130" Aluminum Fixed Window - S.M.I. approved on 11/30/17 and expiring on 07/31/19.


Manuel Pérez, P.E.
Product Control Examiner
NOA No. 20-0519.08
Expiration Date: July 31, 2024
Approval Date: September 10, 2020

CGI Windows and Doors, Inc.

NOTICE OF ACCEPTANCE: EVIDENCE SUBMITTED

2. NEW EVIDENCE SUBMITTED

A. DRAWINGS

1. Drawing No. **PW130SMI-NOA**, titled “‘Sentinel’ Series 130 Fixed Window - SM”, sheets 1 through 6 of 6, dated 05/22/19, with revision A dated 05/07/20, prepared by manufacturer, signed and sealed by Anthony Lynn Miller, P.E.

B. TESTS

1. Test reports on: 1) Air Infiltration Test, per FBC, TAS 202-94
2) Uniform Static Air Pressure Test, Loading per FBC, TAS 202-94
3) Water Resistance Test, per FBC, TAS 202-94
4) Large Missile Impact Test per FBC, TAS 201-94
5) Cyclic Wind Pressure Loading per FBC, TAS 203-94
6) Forced Entry Test, per ASTM F588 and TAS 202-94

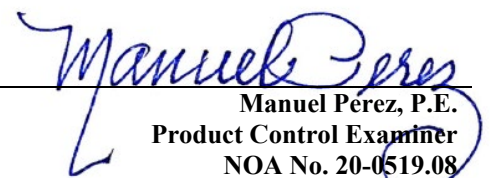
along with marked-up drawings and installation diagram of all PGT Industries, Inc. CGI Windows and Doors, Inc., representative units listed below and tested to qualify **Dowsil 791** and **Dowsil 983** silicones, per Proposal #**19-1155TP**, prepared by Fenestration Testing Laboratory, Inc., Test Reports No.:

PGT Industries, Inc. test specimens:

FTL-7897, PGT PW5520 PVC Fixed Window (unit 6 in proposal), dated 09/03/14
FTL-20-2107.1, PGT SGD780 Aluminum Sliding Glass Door (unit 7 in proposal)
FTL-20-2107.2, PGT CA740 Alum. Outswing Casement Window (unit 8 in proposal)
FTL-20-2107.3, PGT PW7620A Aluminum Fixed Window (unit 9 in proposal) and
FTL-20-2107.4, PGT PW7620A Aluminum Fixed Window (unit 10 in proposal)
all dated 07/13/20 and signed and sealed by Idalmis Ortega, P.E.

CGI Windows and Doors Inc. test specimens:

FTL-20-2108.1, CGI SH360 Aluminum Single Hung Window (unit 1 in proposal)
FTL-20-2108.2, CGI CA238 Alum. Outswing Casement Window (unit 2 in proposal)
FTL-20-2108.3, CGI SGD560 Aluminum Sliding Glass Door (unit 3 in proposal)
FTL-20-2108.4, CGI PW410 Aluminum Fixed Window (unit 4 in proposal) and
FTL-20-2108.5, CGI SH360 Aluminum Single Hung Window (unit 5 in proposal)
all dated 08/24/20 and signed and sealed by Idalmis Ortega, P.E.



Manuel Pérez, P.E.
Product Control Examiner
NOA No. 20-0519.08

Expiration Date: July 31, 2024

Approval Date: September 10, 2020

CGI Windows and Doors, Inc.

NOTICE OF ACCEPTANCE: EVIDENCE SUBMITTED

2. NEW EVIDENCE SUBMITTED (CONTINUED)

C. CALCULATIONS

1. Anchor verification calculations and structural analysis, complying with **FBC 5th Edition (2014)**, dated 09/06/17, prepared by Al-Farooq Corporation, signed and sealed by Javad Ahmad, P.E., updated to comply with **FBC 7th Edition (2020)**, on 05/11/20 by manufacturer, signed and sealed by Anthony Lynn Miller, P.E.

D. QUALITY ASSURANCE

1. Miami-Dade Department of Regulatory and Economic Resources (RER)

E. MATERIAL CERTIFICATIONS


1. Notice of Acceptance No. **17-0712.05** issued to **Eastman Chemical Company (MA)** for their “**Saflex Clear and Color Glass Interlayers**” dated 09/07/17, expiring on 05/21/21.
2. Notice of Acceptance No. **19-0305.02** issued to **Kuraray America, Inc.** for their “**Trosifol® Ultraclear, Clear and Color PVB Glass Interlayers**” dated 05/09/19, expiring on 07/08/24.

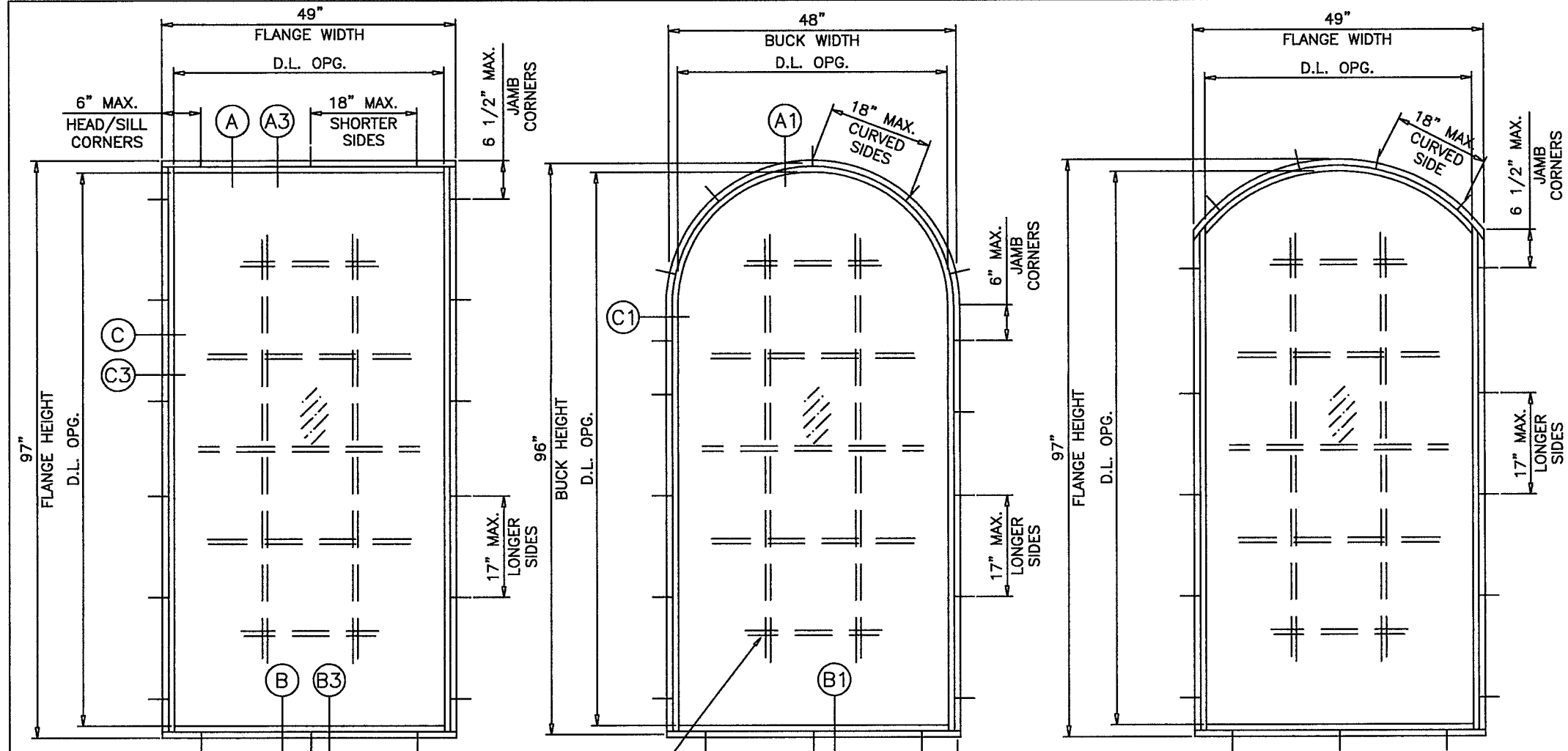
F. STATEMENTS

1. Statement letter of conformance, of complying with **FBC 6th Edition (2017)**, and **FBC 7th Edition (2020)**, dated May 07, 2020, issued by manufacturer, signed and sealed by Anthony Lynn Miller, P.E.
2. Statement letter of no financial interest, dated May 07, 2020, issued by manufacturer, signed and sealed by Anthony Lynn Miller, P.E.
3. Proposal No. **19-1155 TP** issued by the Product Control Section, dated January 10, 2020, signed by Ishaq Chanda, P.E.

G. OTHERS

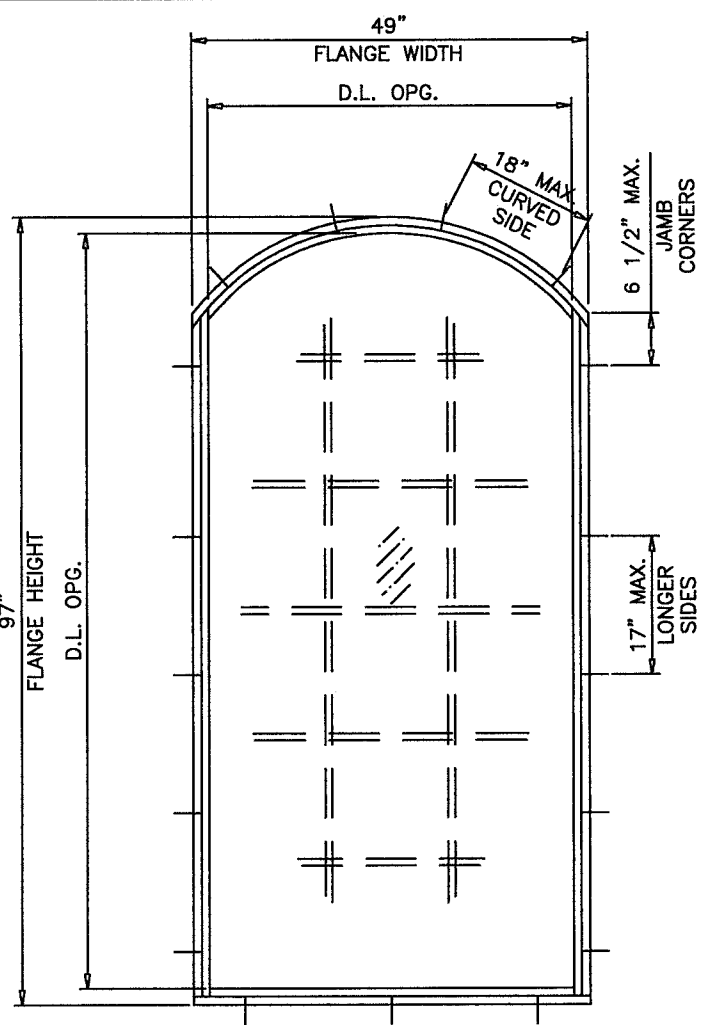
1. Notice of Acceptance No. **19-0603.01**, issued to CGI Windows and Doors, Inc. for their Series “Sentinel 130” Aluminum Fixed Window - S.M.I. approved on 07/03/19 and expiring on 07/31/24.


Manuel Pérez, P.E.
Product Control Examiner
NOA No. 20-0519.08
Expiration Date: July 31, 2024
Approval Date: September 10, 2020



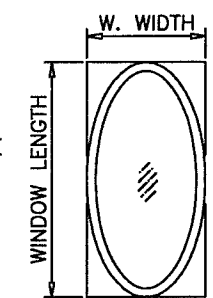
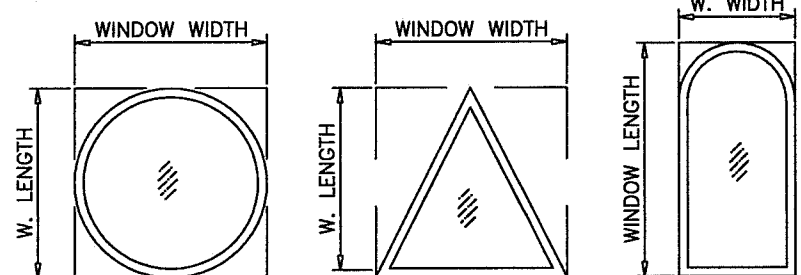
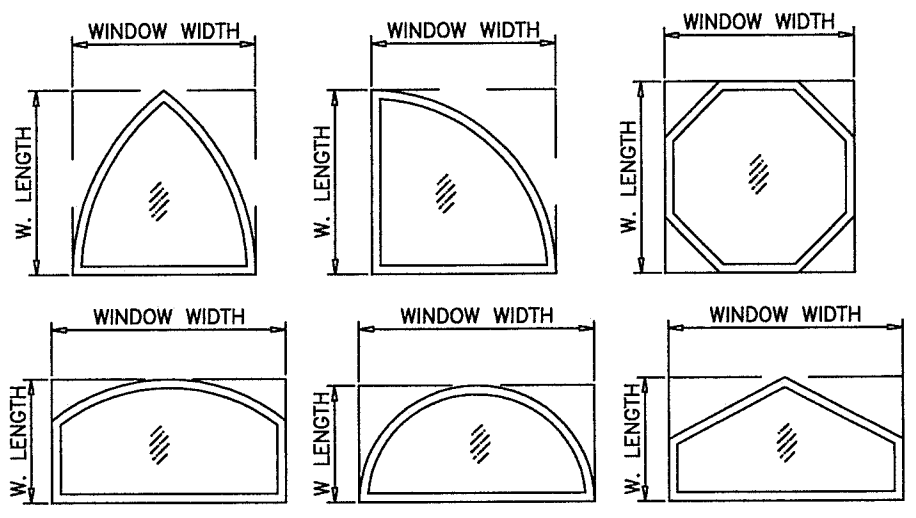
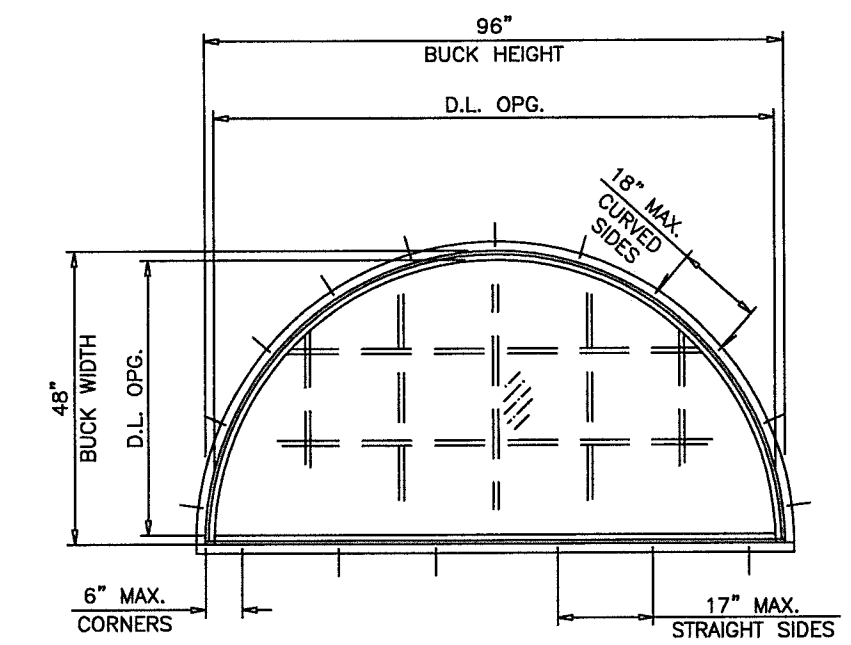
TYP. FLANGE & FLANGE ADAPTOR FRAME

TYP. EQUAL LEG FRAME



TYPICAL ELEVATIONS
 ANCHOR SPACING SHOWN HEREIN APPLICABLE TO FLANGE AND FLUSH FRAMES. SEE SHEET 2 FOR FIN FRAMES.

LAM. GLASS
 INSULATING LAM.GLASS
 SMALL MISSILE IMPACT



THESE WINDOWS ARE RATED FOR SMALL MISSILE IMPACT. MIAMI-DADE COUNTY APPROVED IMPACT RESISTANT SHUTTERS REQUIRED FOR INSTALLATIONS UP TO 30 FT. OF GRADE. SHUTTERS NOT REQD. FOR INSTALLATIONS ABOVE 30 FT. OF GRADE.
 ALLOWABLE LOADS FOR ALTERNATE SHAPES AS SHOWN ABOVE OR SIMILAR CAN BE VERIFIED BY INSCRIBING PICTURE WINDOW SHAPE WITHIN SQUARE OR RECTANGLE AS SHOWN IN DOTTED LINES AND OBTAINING ALLOWABLE LOADS FROM THOSE SHAPES.

SERIES 130 SENTINEL ALUMINUM FIXED WINDOW - SMI
 DESIGN LOAD RATINGS FOR THESE WINDOWS TO BE AS PER CHARTS SHOWN ON SHEET 2.

APPROVAL APPLIES TO SINGLE UNITS OR SIDE BY SIDE COMBINATIONS OF FIX./FIX. OR FIX. WDW. WITH OTHER MIAMI-DADE COUNTY APPROVED WINDOWS USING MIAMI-DADE COUNTY APPROVED MULLIONS IN BETWEEN. LOWER DESIGN PRESSURE FROM WINDOWS OR MULLION APPROVAL WILL APPLY TO ENTIRE SYSTEM.

THIS PRODUCT HAS BEEN DESIGNED AND TESTED TO COMPLY WITH THE REQUIREMENTS OF THE 2017 (6TH EDITION) & 2020 (7TH EDITION) FLORIDA BUILDING CODE INCLUDING HIGH VELOCITY HURRICANE ZONE (HVHZ).

1BY OR 2BY WOOD BUCKS & BUCK FASTENERS BY OTHERS, MUST BE DESIGNED AND INSTALLED ADEQUATELY TO TRANSFER APPLIED PRODUCT LOADS TO THE BUILDING STRUCTURE. ANCHORS SHALL BE CORROSION RESISTANT, SPACED AS SHOWN ON DETAILS AND INSTALLED PER MANUF'S INSTRUCTIONS. SPECIFIED EMBEDMENT TO BASE MATERIAL SHALL BE BEYOND WALL DRESSING OR STUCCO.

A LOAD DURATION INCREASE IS USED IN DESIGN OF ANCHORS INTO WOOD ONLY. ALL SHIMS TO BE HIGH IMPACT, NON-METALLIC AND NON-COMPRESSIBLE.

MATERIALS INCLUDING BUT NOT LIMITED TO STEEL/METAL SCREWS, THAT COME INTO CONTACT WITH OTHER DISSIMILAR MATERIALS SHALL MEET THE REQUIREMENTS OF THE 2017/2020 FLORIDA BLDG. CODE & ADOPTED STANDARDS.

THIS PRODUCT APPROVAL IS GENERIC AND DOES NOT PROVIDE INFORMATION FOR A SITE SPECIFIC PROJECT, i.e. LIFE SAFETY OF THIS PRODUCT, ADEQUACY OF STRUCTURE RECEIVING THIS PRODUCT AND SEALING AROUND OPENING FOR WATER INFILTRATION RESISTANCE ETC. CONDITIONS NOT SHOWN IN THIS DRAWING ARE TO BE ANALYZED SEPARATELY, AND TO BE REVIEWED BY BUILDING OFFICIAL.

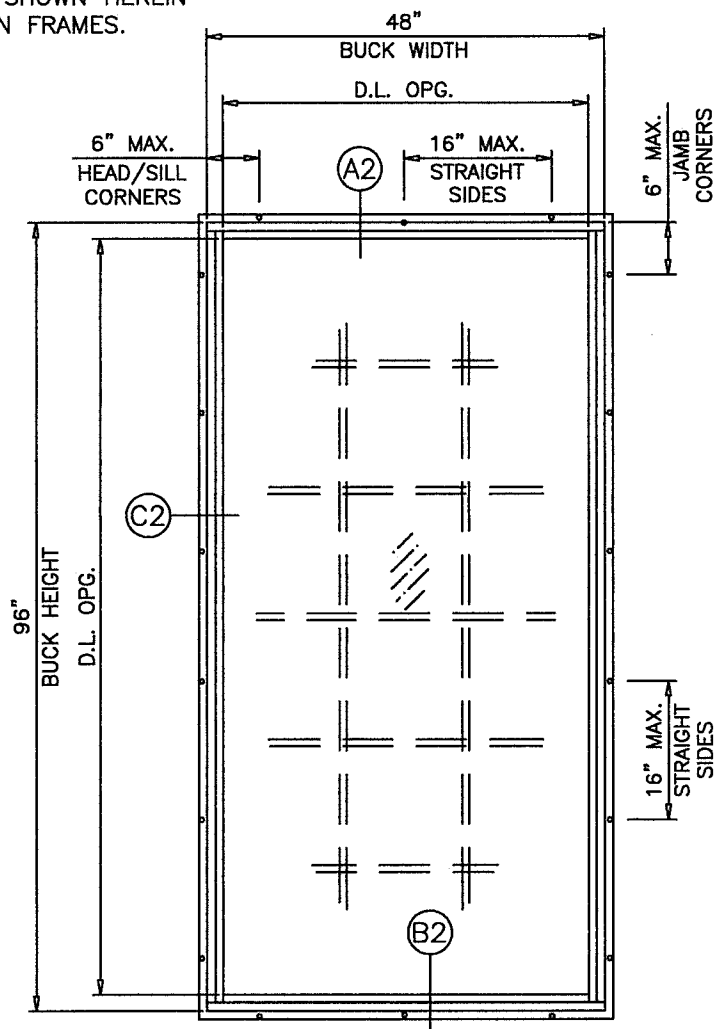
PRODUCT REVISED
 as complying with the Florida Building Code
 NOA-No. **20-0519.08**
 Expiration Date: **07/31/2024**
 By: *Manuel Perez*
 Miami-Dade Product Control

Title: "SENTINEL" SERIES 130 FIXED WINDOW - SM		Drawn By: AGK		<p>3780 W. 104th Street, Hialeah, FL 33018 Tel: 305.593.6590 Fax: 305.593.6592</p>	
Description: TYPICAL ELEVATIONS		Date: 05/22/19			
Revision: ANCHOR TYPES, UPDATED TO FBC 2020		Rev. By: JR	Rev. Date: 05/07/20	PREPARED BY LYNN MILLER 1070 TECHNOLOGY DRIVE N. VENICE, FL 34275 (941) 480-1600 REGISTRATION #29296	
Series/Model: PW-130 SM	Scale: NTS	Sheet: 1 OF 6	Drawing No. PW130SMI-NOA	Rev: A	A. LYNN MILLER, P.E. P.E.# 58705

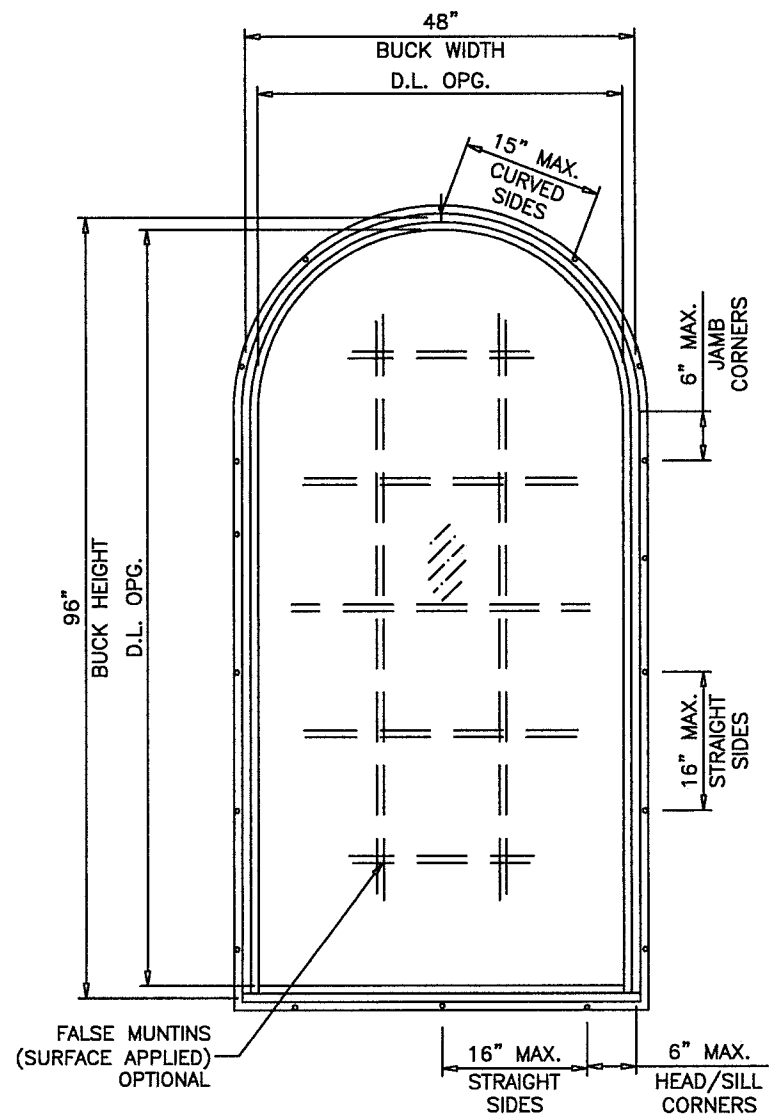
TYPICAL ELEVATIONS

ANCHOR SPACING SHOWN HEREIN APPLICABLE TO FIN FRAMES.

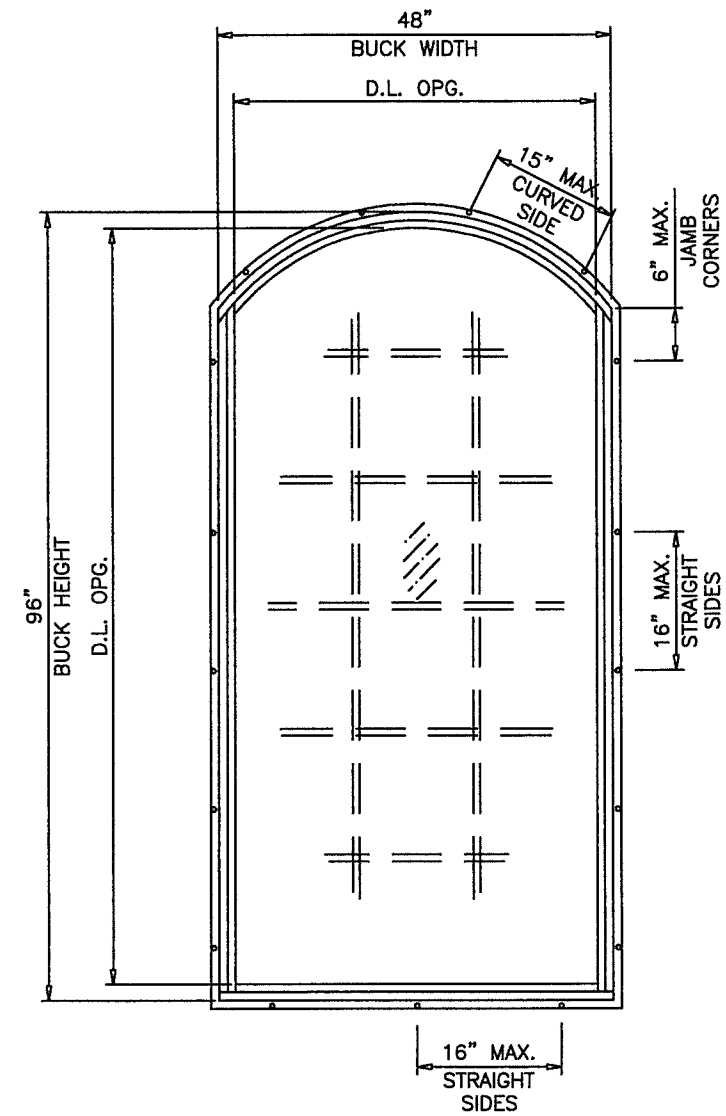
LAM. GLASS
INSULATING LAM.GLASS
SMALL MISSILE IMPACT



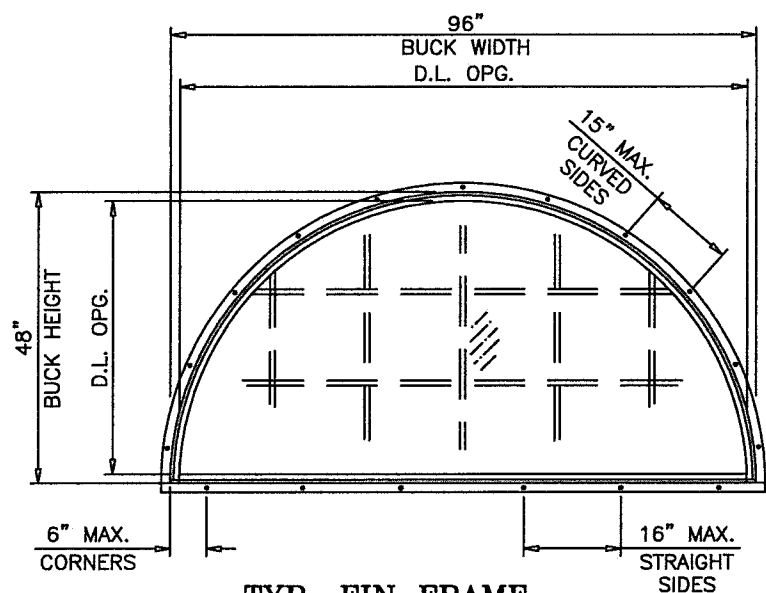
TYP. FIN FRAME



TYP. FIN FRAME



TYP. FIN FRAME



TYP. FIN FRAME

ALTERNATE SHAPES AS SHOWN ON SHEET 1 ALSO AVAILABLE FOR FIN FRAMES

DAYLITE OPENINGS:
D.L.O. HEIGHT = BUCK HEIGHT - 3.00"
D.L.O. WIDTH = BUCK WIDTH - 3.00"

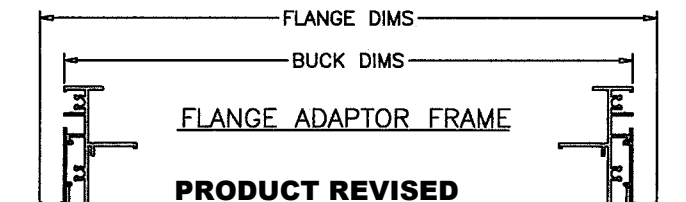
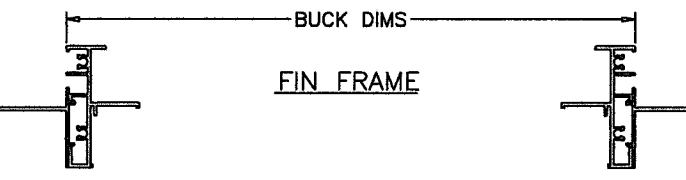
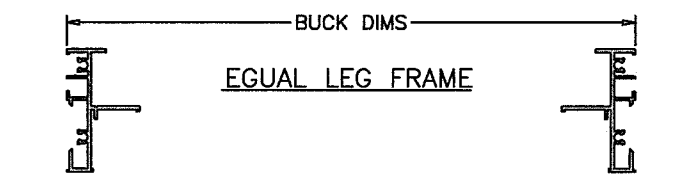
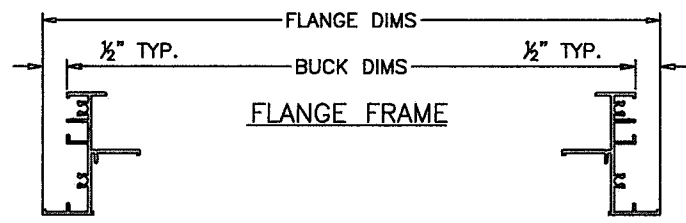
PRODUCT REVISED
as complying with the Florida Building Code
NOA-No. **20-0519.08**
Expiration Date: **07/31/2024**
By: *Manuel Torres*
Miami-Dade Product Control

Title: "SENTINEL" SERIES 130 FIXED WINDOW - SM		Drawn By: AGK		<p>Impact Resistant Windows & Doors WERE STRONGER™</p> <p>3780 W. 104th Street, Hialeah, FL 33018 Tel: 305.593.6590 Fax: 305.593.6592</p>	
Description: TYPICAL ELEVATION CONT.		Date: 05/22/19			
Revision: MINOR SHEET REFORMATTING.		Rev. By: JR	Rev. Date: 05/07/20	PREPARED BY LYNN MILLER 1070 TECHNOLOGY DRIVE N. VENICE, FL 34275 (941) 480-1600 REGISTRATION #29296	
Series/Model: PW-130 SM	Scale: NTS	Sheet: 2 OF 6	Drawing No. PW130SMI-NOA	Rev: A	A. LYNN MILLER, P.E. P.E.# 58705

DESIGN LOAD CAPACITY - PSF					
FLANGE DIMS.		BUCK DIMS.		GLASS TYPES 'D' & 'D1'	
WIDTH (W)	LENGTH (L)	WIDTH (W)	LENGTH (L)	EXT.(+)	INT.(-)
24"		23"		100.0	120.0
30"		29"		100.0	120.0
36"		35"		100.0	120.0
42"		41"		100.0	120.0
48"	36"	47"	35"	100.0	120.0
54"		53"		100.0	120.0
60"		59"		100.0	120.0
61"		60"		100.0	120.0
24"		23"		100.0	120.0
30"		29"		100.0	120.0
36"		35"		100.0	120.0
42"		41"		100.0	120.0
48"	48"	47"	47"	100.0	120.0
54"		53"		100.0	120.0
60"		59"		100.0	120.0
61"		60"		100.0	120.0
24"		23"		100.0	120.0
30"		29"		100.0	120.0
36"		35"		100.0	120.0
42"		41"		100.0	120.0
48"	60"	47"	59"	100.0	120.0
54"		53"		90.6	108.7
60"		59"		81.4	97.6
61"		60"		81.4	97.6
24"		23"		100.0	120.0
30"		29"		100.0	120.0
36"		35"		100.0	120.0
42"		41"		100.0	120.0
48"	72"	47"	71"	100.0	120.0
54"		53"		90.6	108.7
60"		59"		81.4	97.6
61"		60"		80.0	96.0
24"		23"		100.0	120.0
30"		29"		100.0	120.0
36"		35"		100.0	120.0
42"		41"		100.0	120.0
48"	84"	47"	83"	100.0	120.0
54"		53"		90.6	108.7
56"		55"		87.3	104.7
24"		23"		100.0	120.0
30"		29"		100.0	120.0
36"		35"		100.0	120.0
42"		41"		100.0	120.0
48"	97"	47"	96"	100.0	120.0
49"		48"		100.0	120.0
24"		23"		100.0	120.0
30"		29"		100.0	120.0
36"		35"		100.0	120.0
42"		41"		100.0	120.0
46"	102"	45"	101"	100.0	117.6
24"		23"		100.0	120.0
30"		29"		100.0	120.0
36"		35"		100.0	120.0
42"		41"		100.0	120.0
44"	108"	43"	107"	100.0	113.0

DESIGN LOAD CAPACITY - PSF					
FLANGE DIMS.		BUCK DIMS.		GLASS TYPES 'D' & 'D1'	
WIDTH (W)	LENGTH (L)	WIDTH (W)	LENGTH (L)	EXT.(+)	INT.(-)
24"		23"		100.0	120.0
30"		29"		100.0	120.0
36"	114"	35"	113"	100.0	120.0
41"		40"		100.0	120.0
24"		23"		100.0	120.0
30"		29"		100.0	120.0
36"	120"	35"	119"	100.0	120.0
39"		38"		100.0	120.0
24"		23"		100.0	120.0
30"		29"		100.0	120.0
36"	121"	35"	120"	100.0	120.0
39"		38"		100.0	120.0

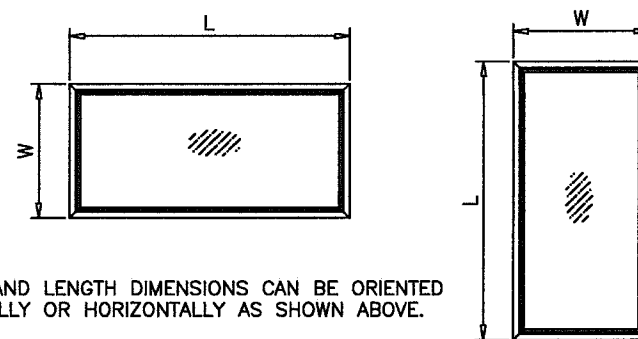
DESIGN LOAD CAPACITY - PSF					
FLANGE DIMS.		BUCK DIMS.		GLASS TYPES 'D' & 'D1'	
WIDTH (W)	LENGTH (L)	WIDTH (W)	LENGTH (L)	EXT.(+)	INT.(-)
19-1/8"		18-1/8"		100.0	120.0
26-1/2"		25-1/2"		100.0	120.0
37"		36"		100.0	120.0
48"	26"	47"	25"	100.0	120.0
53-1/8"		52-1/8"		100.0	120.0
61"		60"		100.0	120.0
19-1/8"		18-1/8"		100.0	120.0
26-1/2"		25-1/2"		100.0	120.0
37"		36"		100.0	120.0
48"	38-3/8"	47"	37-3/8"	100.0	120.0
53-1/8"		52-1/8"		100.0	120.0
61"		60"		100.0	120.0
19-1/8"		18-1/8"		100.0	120.0
26-1/2"		25-1/2"		100.0	120.0
37"		36"		100.0	120.0
48"	50-5/8"	47"	49-5/8"	100.0	120.0
53-1/8"		52-1/8"		96.7	116.1
61"		60"		96.7	116.1
75-1/4"		74-1/4"		96.7	116.1
93-3/4"		92-3/4"		96.7	116.1
19-1/8"		18-1/8"		100.0	120.0
26-1/2"		25-1/2"		100.0	120.0
37"		36"		100.0	120.0
48"	63"	47"	62"	100.0	120.0
53-1/8"		52-1/8"		92.1	110.5
61"		60"		80.0	96.0
75-1/4"		74-1/4"		77.4	92.9
19-1/8"		18-1/8"		100.0	120.0
26-1/2"		25-1/2"		100.0	120.0
37"		36"		100.0	120.0
48"	76"	47"	75"	100.0	120.0
53-1/8"		52-1/8"		92.1	110.5
61"		60"		80.0	96.0



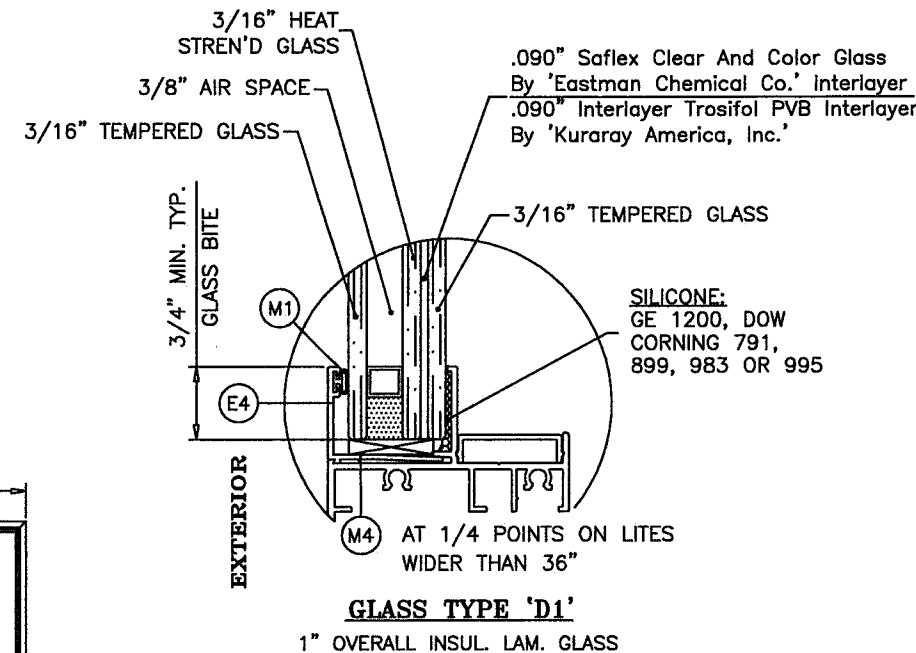
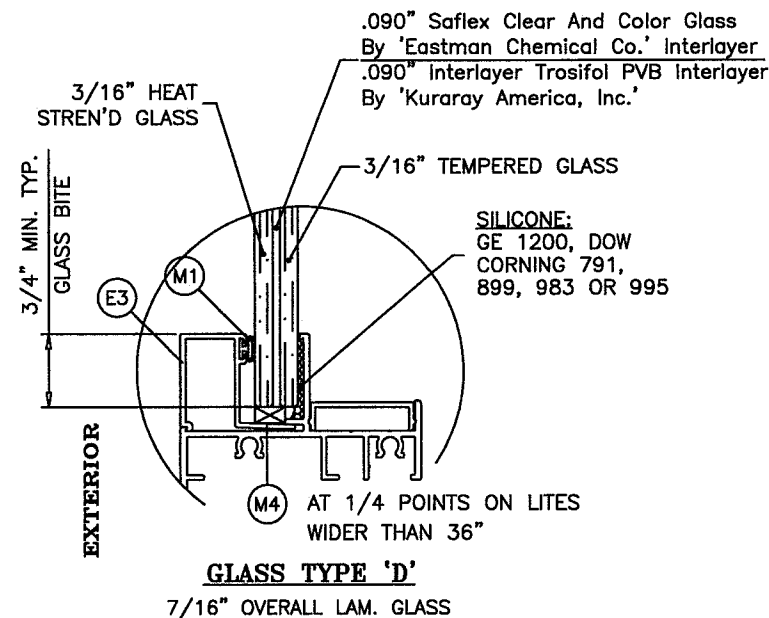
PRODUCT REVISED
 as complying with the Florida
 Building Code
NOA-No. 20-0519.08
Expiration Date: 07/31/2024
 By: *Manuel Perez*
Miami Dade Product Control

NOTE:
 GLASS CAPACITIES ON THIS SHEET ARE
 BASED ON ASTM E1300-09 (3 SEC. GUSTS)
 AND FLORIDA BUILDING COMMISSION
 DECLARATORY STATEMENT DCA05-DEC-219

ANCHOR SPACING TO BE AS PER SHEETS 1 & 2



NOTE:
 WIDTH AND LENGTH DIMENSIONS CAN BE ORIENTED
 VERTICALLY OR HORIZONTALLY AS SHOWN ABOVE.



Title: "SENTINEL" SERIES 130 FIXED WINDOW - SM		Drawn By: AGK			
Description: DESIGN LOAD CHARTS		Date: 05/22/19			
Revision: NO CHANGES THIS SHEET.		Rev. By: Rev. Date: JR 05/07/20		3760 W. 104th Street, Hialeah, FL 33018 Tel: 305.593.6590 Fax: 305.593.6592 PREPARED BY LYNN MILLER 1070 TECHNOLOGY DRIVE N. VENICE, FL 34275 (941) 480-1600 REGISTRATION #29296	
Series/Model: PW-130 SM	Scale: NTS	Sheet: 3 OF 6	Drawing No. PW130SMI-NOA	Rev: A	A. LYNN MILLER, P.E. P.E.# 58705

TYPICAL INSTALLATION DETAILS
THESE DETAILS ARE TYPICAL ON ALL FOUR SIDES OF WINDOW

TYPICAL ANCHORS: SEE ELEV. FOR SPACING
(FLANGE & EQUAL LEG FRAMES)

1/4" DIA. KWIK-CON II BY 'HILTI' (Fu=163 KSI, Fy=157 KSI)
 1/4" DIA. ULTRACON BY 'ELCO/DEWALT' (Fu=177 KSI, Fy=155 KSI)
 INTO 2BY WOOD BUCKS OR WOOD STRUCTURES
 1-1/2" MIN. PENETRATION INTO WOOD
 THRU 1BY BUCKS INTO CONCRETE OR BLOCKS
 1-1/4" MIN. EMBED INTO CONCRETE (HEADS/SILL/JAMBS)
 1-1/4" MIN. EMBED INTO BLOCKS (JAMBS)
 DIRECTLY INTO CONCRETE OR BLOCKS
 1-1/4" MIN. EMBED INTO CONCRETE (HEADS/SILL/JAMBS)
 1-1/4" MIN. EMBED INTO BLOCKS (JAMBS)

TYPICAL EDGE DISTANCE
 INTO CONCRETE AND MASONRY = 2 1/2" MIN.
 INTO WOOD STRUCTURE = 1" MIN.

1/4" DIA. ULTRACON+ BY 'DEWALT' (Fu=164 KSI, Fy=148 KSI)
 INTO 2BY WOOD BUCKS OR WOOD STRUCTURES
 1-3/8" MIN. PENETRATION INTO WOOD
 THRU 1BY BUCKS INTO CONCRETE OR BLOCKS
 1-3/8" MIN. EMBED INTO CONCRETE (HEADS/SILL/JAMBS)
 1-1/4" MIN. EMBED INTO HOLLOW BLOCKS (JAMBS)
 1-3/4" MIN. EMBED INTO FILLED BLOCKS (JAMBS)

DIRECTLY INTO CONCRETE OR BLOCKS
 1-3/8" MIN. EMBED INTO CONCRETE (HEADS/SILL/JAMBS)
 1-1/4" MIN. EMBED INTO HOLLOW BLOCKS (JAMBS)
 1-3/4" MIN. EMBED INTO FILLED BLOCKS (JAMBS)

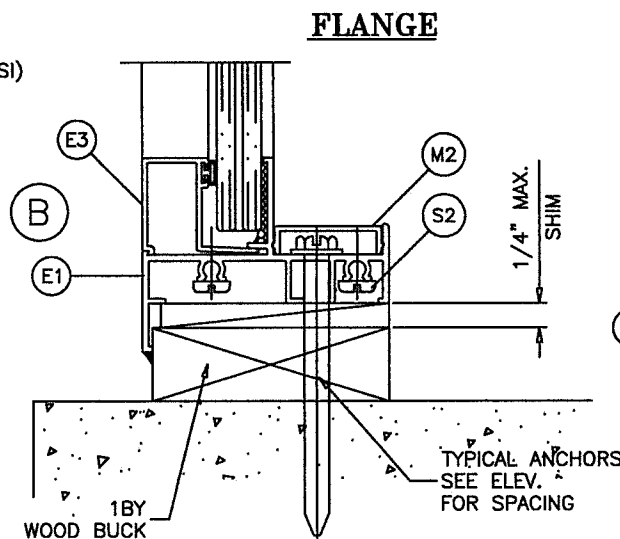
TYPICAL EDGE DISTANCE
 INTO CONCRETE AND MASONRY = 1 9/16" MIN.
 INTO WOOD STRUCTURE = 1" MIN.

#14 SMS OR SELF DRILLING SCREWS (GRADE 2 CRS)
 INTO MIAMI-DADE APPROVED MULLIONS OR
 INTO METAL STRUCTURES (HEAD/SILL/JAMBS)
 (3) THREADS MIN. PENETRATION BEYOND SUBTRATE
 ALUMINUM: 1/8" THK. MIN (6063-T5 MIN.)
 STEEL: 1/8" THK. MIN. (Fy = 35 KSI MIN.)
 (STEEL IN CONTACT WITH ALUMINUM TO BE PLATED
 OR PAINTED)

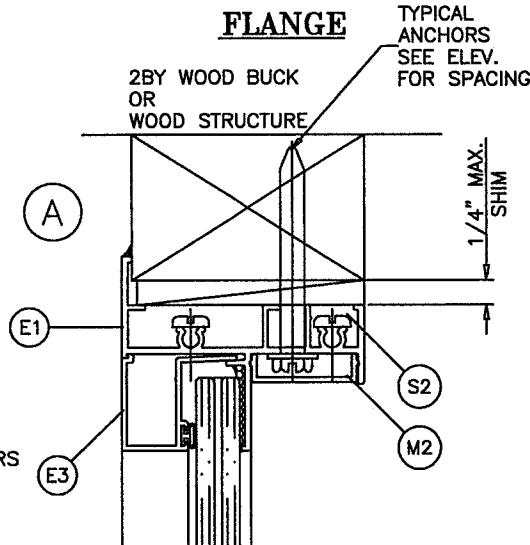
TYPICAL EDGE DISTANCE
 INTO METAL STRUCTURE = 3/4" MIN.

WOOD AT HEAD, SILL OR JAMBS SG = 0.55 MIN
 CONCRETE AT HEAD, SILL OR JAMBS f'c = 3000 PSI MIN.
 C-90 HOLLOW/FILLED BLOCK AT JAMBS f'm = 2000 PSI MIN.

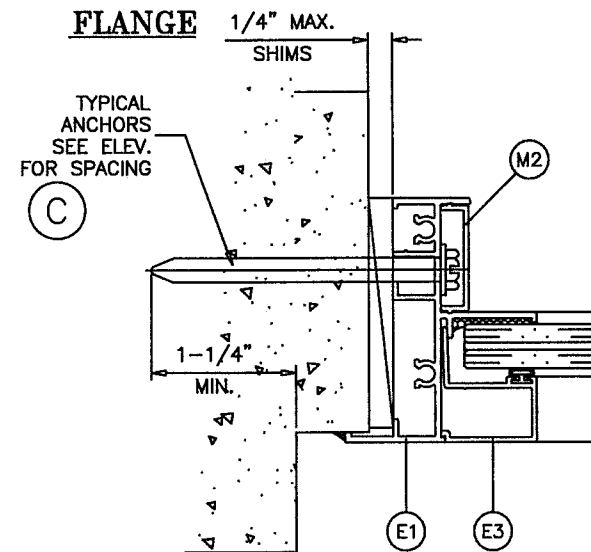
INSTALLATION DETAILS THRU 1X
 WOOD BUCKS INTO CONCRETE



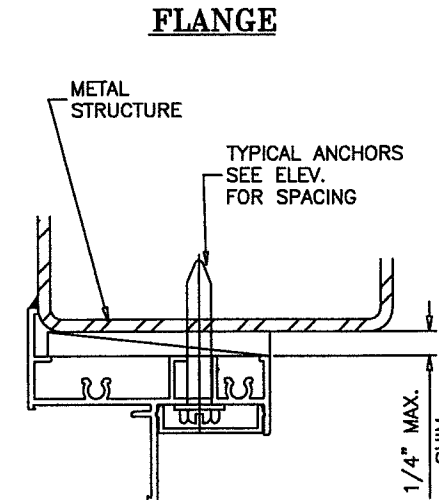
INSTALLATION DETAILS THRU 2X
 BUCKS OR INTO WOOD STRUCTURES



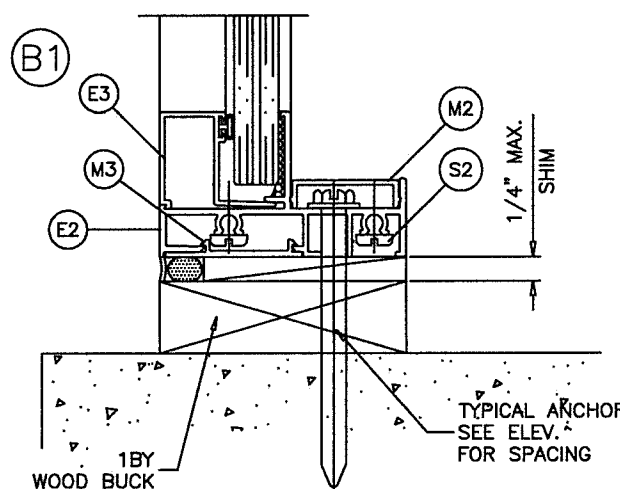
INSTALLATION DETAILS
 DIRECTLY INTO CONCRETE



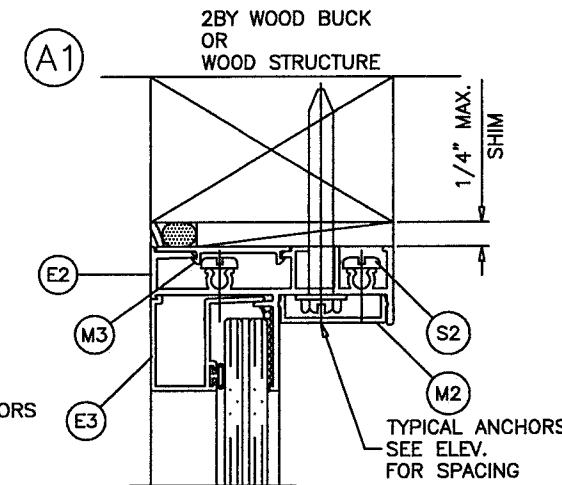
INSTALLATION DETAILS INTO METAL
 STRUCTURES OR INTO APPROVED MULLIONS



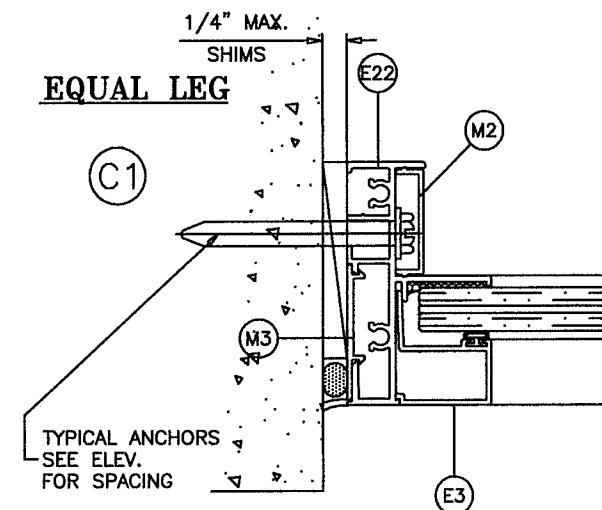
EQUAL LEG



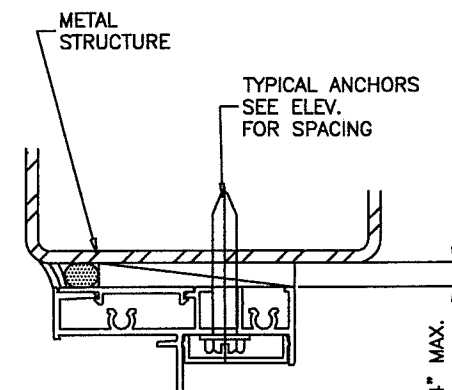
EQUAL LEG



EQUAL LEG



EQUAL LEG



WOOD BUCKS AND METAL STRUCTURE NOT BY CGI WDW. MUST SUSTAIN LOADS IMPOSED
 BY GLAZING SYSTEM AND TRANSFER THEM TO THE BUILDING STRUCTURE.

TYPICAL ANCHORS: SEE ELEV. FOR SPACING
FIN FRAME

#8 SMS (GRADE 2 CRS)
 INTO 2BY WOOD BUCKS OR WOOD STRUCTURES
 1-1/4" MIN. PENETRATION INTO WOOD

TYPICAL EDGE DISTANCE
 INTO WOOD STRUCTURE = 1" MIN.

PRODUCT REVISED
 as complying with the Florida
 Building Code
 NOA-No. **20-0519.08**
 Expiration Date: **07/31/2024**

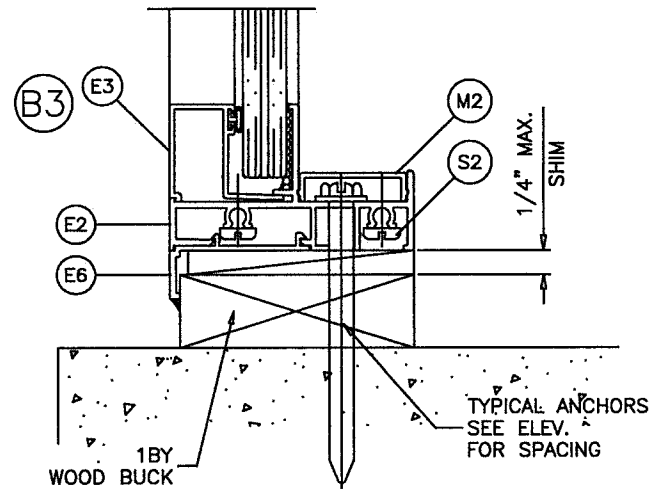
By: *Manuel Perez*
 Miami-Dade Product Control

Title: "SENTINEL" SERIES 130 FIXED WINDOW - SM		Drawn By: AGK		 3780 W. 104th Street, Hialeah, FL 33018 Tel: 305.593.6590 Fax: 305.593.6592	
Description: TYPICAL INSTALLATION DETAILS		Date: 05/22/19			
Revision: REFORMATED & ADDED ANCHOR TYPE		Rev. By: JR	Rev. Date: 05/07/20	PREPARED BY LYNN MILLER 1070 TECHNOLOGY DRIVE N. VENICE, FL 34275 (941) 480-1600 REGISTRATION #29296	
Series/Model: PW-130 SM	Scale: NTS	Sheet: 4 OF 6	Drawing No. PW130SMI-NOA	Rev: A	A. LYNN MILLER, P.E. P.E.# 58705

TYPICAL INSTALLATION DETAILS
THESE DETAILS ARE TYPICAL ON ALL FOUR SIDES OF WINDOW

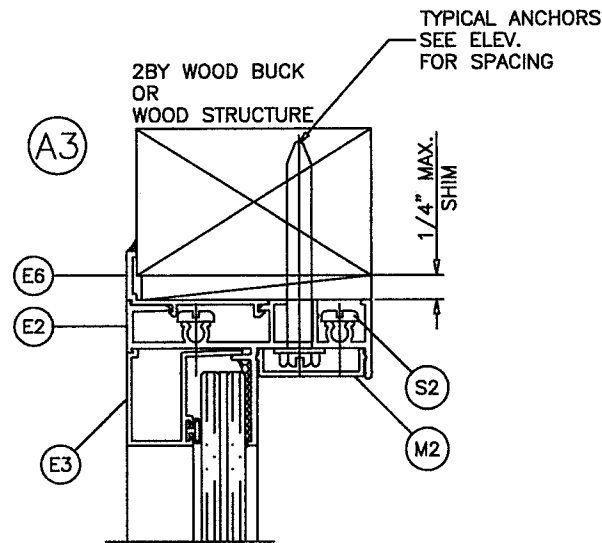
INSTALLATION DETAILS THRU 1X
WOOD BUCKS INTO CONCRETE

FLANGE ADAPTOR



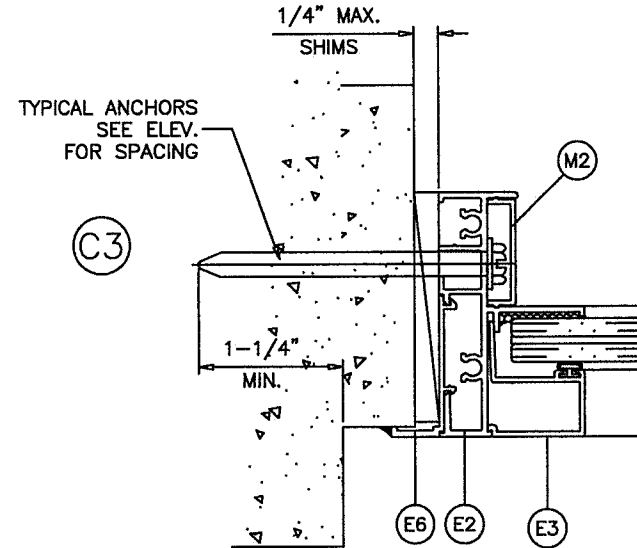
INSTALLATION DETAILS THRU 2X
BUCKS OR INTO WOOD STRUCTURES

FLANGE ADAPTOR



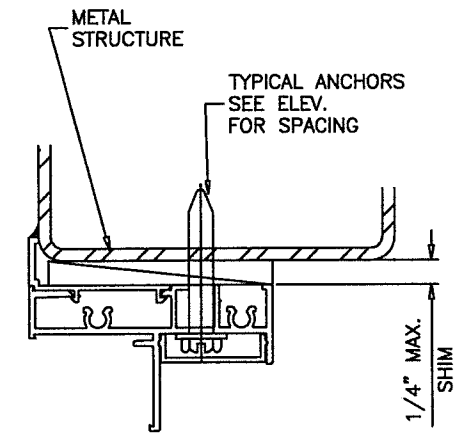
INSTALLATION DETAILS
DIRECTLY INTO CONCRETE

FLANGE ADAPTOR



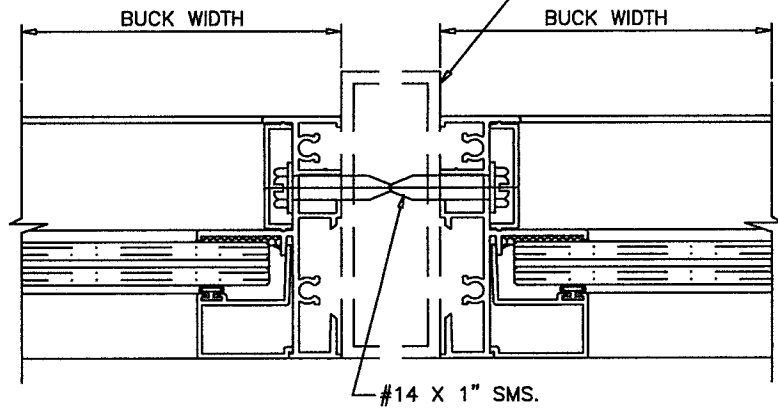
INSTALLATION DETAILS INTO METAL
STRUCTURES OR INTO APPROVED MULLIONS

FLANGE ADAPTOR



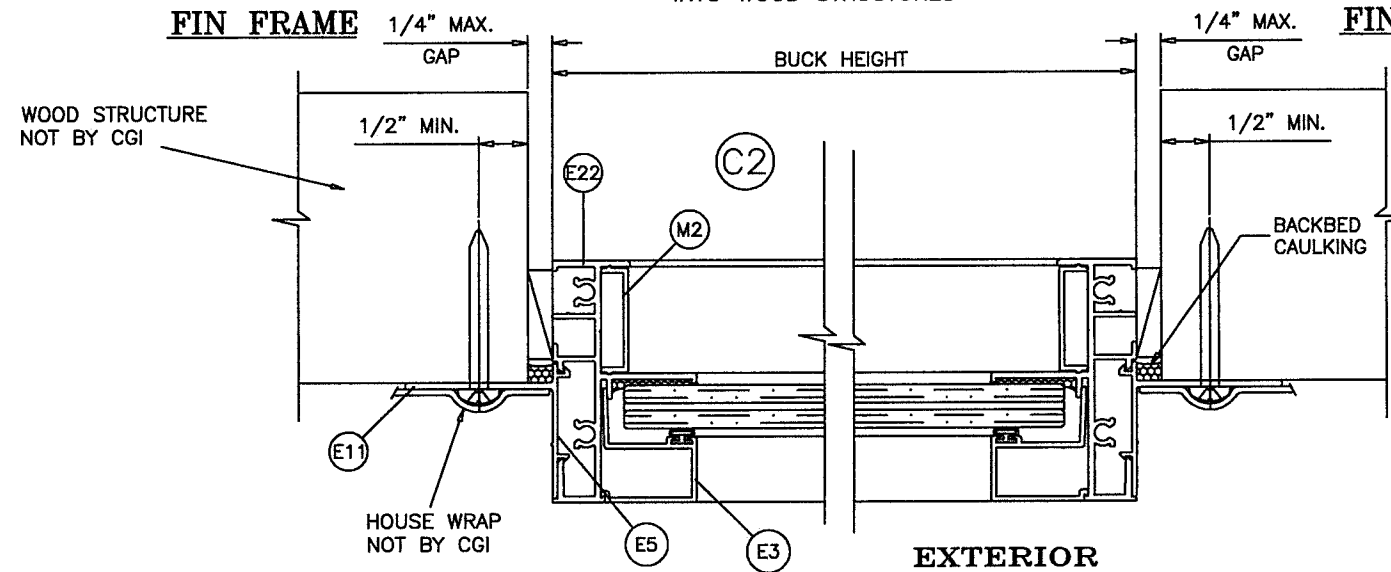
MIAMI-DADE COUNTY APPROVED MULLION
& MULLION ANCHORS SEE SEPARATE NOA

EQUAL LEG

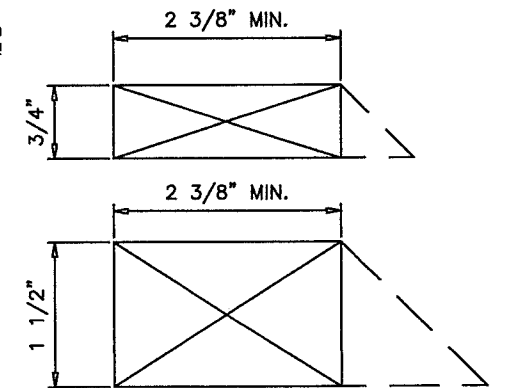


INSTALLATION DETAILS THRU FIN
INTO WOOD STRUCTURES

FIN FRAME



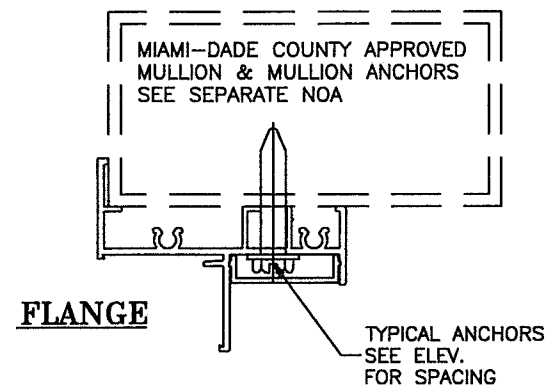
FIN FRAME



WHEN USED THE MIN. WOOD BUCK
DEPTH SHALL BE 2 3/8". THE USE OF
DEEPER OR BEVELED WOODBUCKS IS
PERMITTED.

MIAMI-DADE COUNTY APPROVED
MULLION & MULLION ANCHORS
SEE SEPARATE NOA

INSTALLATION DETAILS INTO METAL
STRUCTURES OR INTO APPROVED MULLIONS



PRODUCT REVISED
as complying with the Florida
Building Code
NOA-No. **20-0519.08**
Expiration Date: **07/31/2024**
By: *Manuel Perez*
Miami-Dade Product Control

Title: "SENTINEL" SERIES 130 FIXED WINDOW - SM		Drawn By: AGK	
Description: TYPICAL INSTALLATION DETAILS CONT.		Date: 05/22/19	
Revision: REFORMATED & ADDED ANCHOR TYPE	Rev. By: JR	Rev. Date: 05/07/20	
Series/Model: PW-130 SM	Scale: NTS	Sheet: 5 OF 6	Drawing No. PW130SMI-NOA
			Rev: A

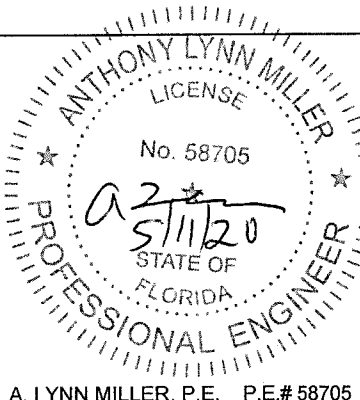


3780 W. 104th Street, Hialeah, FL 33018
Tel: 305.593.6590 | Fax: 305.593.6592

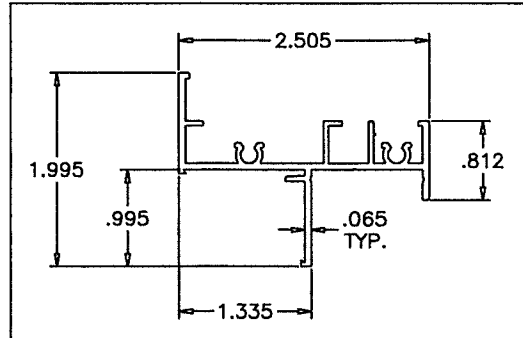
PREPARED BY LYNN MILLER
1070 TECHNOLOGY DRIVE
N. VENICE, FL 34275

(941) 480-1600

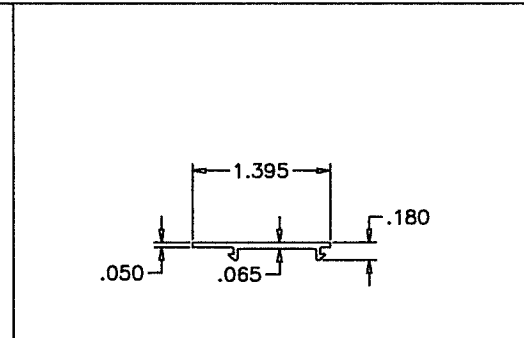
REGISTRATION #29296



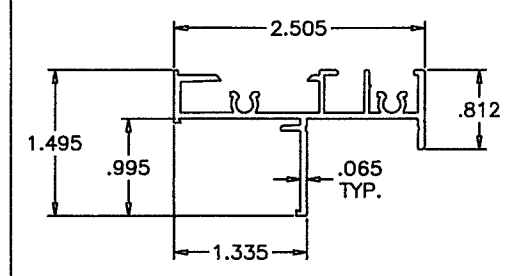
A. LYNN MILLER, P.E. P.E.# 58705



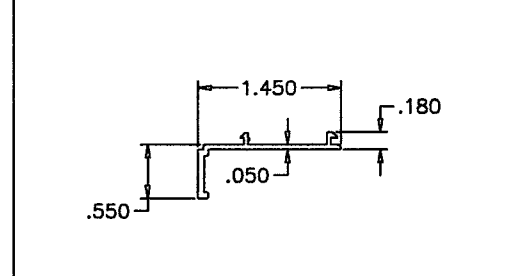
(E1) FLANGE FRAME



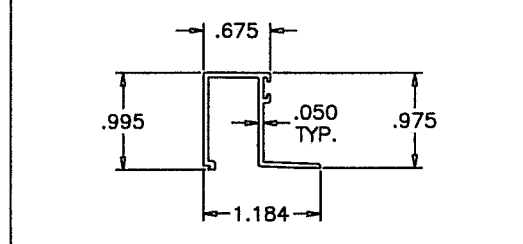
(M3) FLUSH FRAME COVER



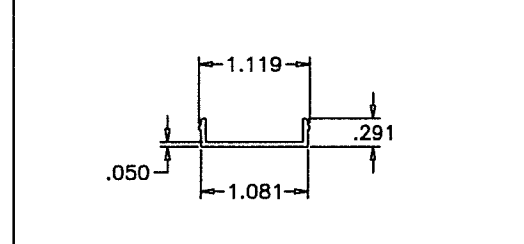
(E2) FLUSH FRAME/FIN FRAME



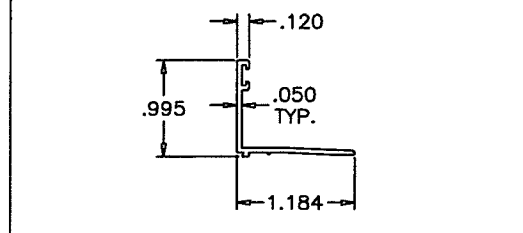
(E6) FLANGE ADAPTOR



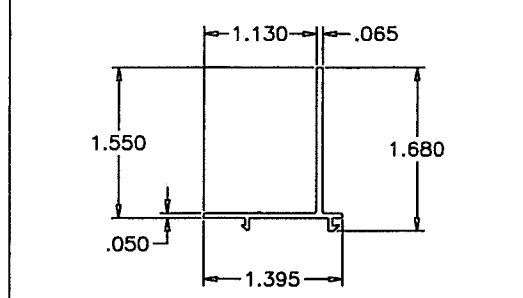
(E3) GLAZING BEAD (LAM. GLASS)



(M2) SCREW COVER

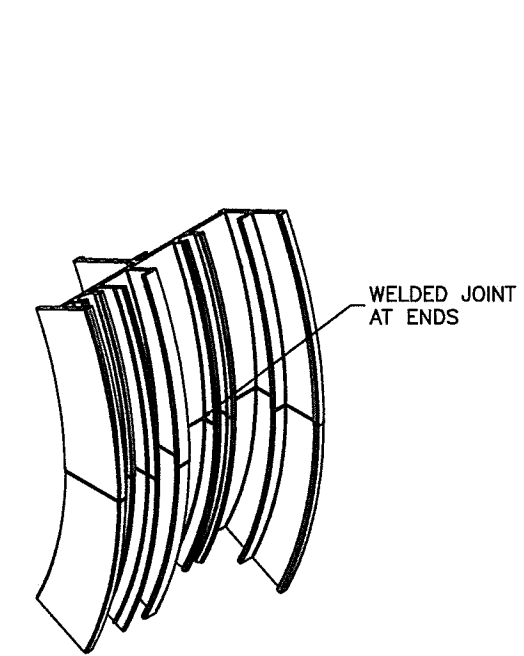


(E4) GLAZING BEAD (LAM. INSUL. GLASS)

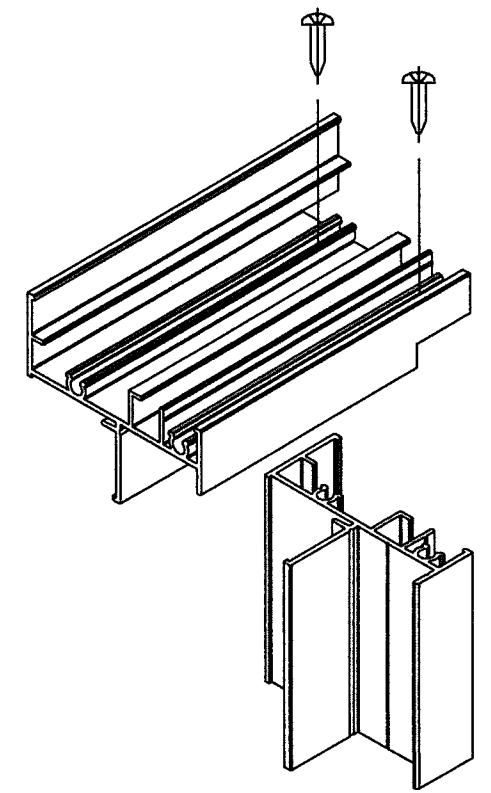


(E5) NAIL FIN ADAPTER

ITEM	PART #	QUANTITY	DESCRIPTION	MATERIAL	MANF./SUPPLIER/REMARKS
E1	CGI-118	4/ WDW.	FLANGE FRAME	6063-T6	--
E2	CGI-119	4/ WDW.	FLUSH FRAME/FIN FRAME	6063-T6	--
E3	CGI-121	4/ WDW.	GLAZING BEAD (LAM. GLASS)	6063-T6	--
E4	CGI-123	4/ WDW.	GLAZING BEAD (LAM. INSUL. GLASS)	6063-T6	--
E5	CGI-110	4/ WDW.	NAIL FIN ADAPTOR	6063-T6	--
E6	CGI-109	4/ WDW.	FRONT FLANGE ADAPTOR	6063-T6	--
M1	CGI-382V	AS REQD.	GLAZING BULB VINYL	PVC	DUROMETER 75-80 SHORE A
M2	CGI-124	AS REQD.	SCREW COVER- OPTIONAL	PVC	--
M3	CGI-112	AS REQD.	FLUSH FRAME COVER	PVC	--
M4	-	2/ LITE	SETTING BLOCKS	EPDM	DUROMETER 85±5 SHORE A
S2	#10 X 1-1/4"	2/ CORNER	ASSEMBLY SCREW PHL. PH SMS	ST/ST	--



CIRCULAR WINDOWS



RECT. OR SQUARE WINDOWS

TYP. CORNER DETAILS

PRODUCT REVISED
 as complying with the Florida
 Building Code
 NOA-No. **20-0519.08**
 Expiration Date: **07/31/2024**
 By: *Manuel Perez*
 Miami-Dade Product Control

Title: "SENTINEL" SERIES 130 FIXED WINDOW - SM		Drawn By: AGK		 3780 W. 104th Street, Hialeah, FL 33018 Tel: 305.593.6690 Fax: 305.593.6692	
Description: EXTRUSIONS, BOM		Date: 05/22/19			
Revision: NO CHANGES THIS SHEET.		Rev. By: JR	Rev. Date: 05/07/20	PREPARED BY LYNN MILLER 1070 TECHNOLOGY DRIVE N. VENICE, FL 34275 (941) 480-1600 REGISTRATION #29296	A. LYNN MILLER, P.E. P.E.# 58705
Series/Model: PW-130 SM	Scale: NTS	Sheet: 6 OF 6	Drawing No. PW130SMI-NOA	Rev: A	